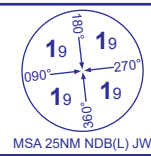


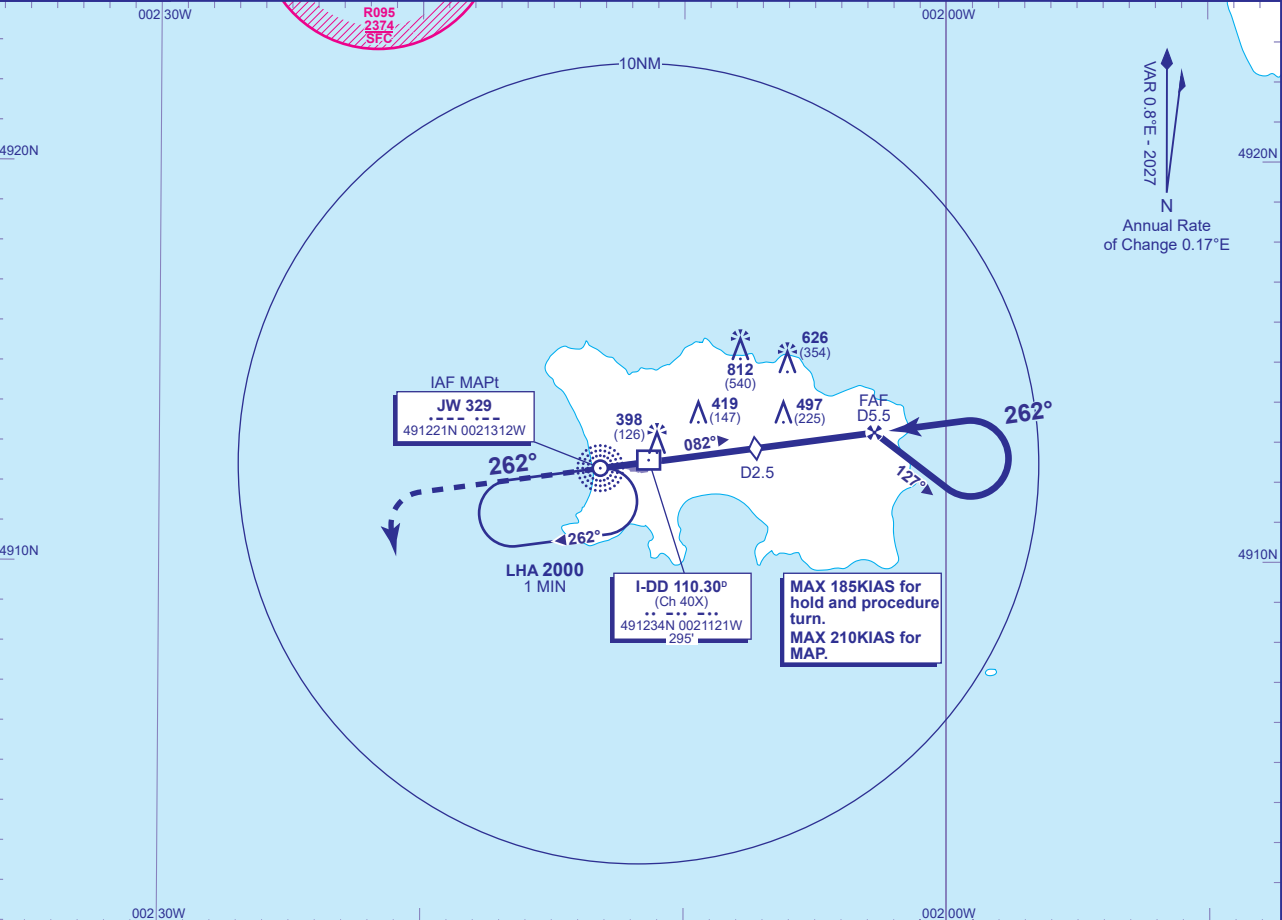
INSTRUMENT APPROACH CHART - ICAO

JERSEY  
NDB(L)/DME  
RWY 26  
(ACFT CAT A,B,C,D)



ATC	125.205, 120.455	JERSEY CONTROL	AD ELEVATION	277
APP	120.305, 118.555	JERSEY APPROACH	THR ELEVATION	272
TWR	119.455	JERSEY TOWER	OBSTACLE ELEVATION	812 AMSL (540) (ABOVE THR)
	121.905	JERSEY GROUND		
ATIS	134.680	JERSEY INFORMATION	BEARINGS ARE MAGNETIC	

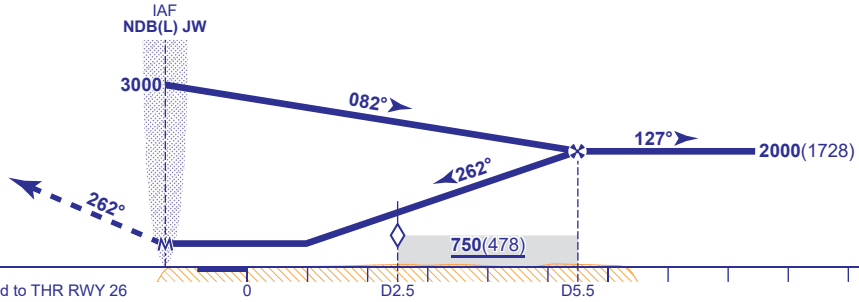
TRANSITION ALTITUDE	5000
---------------------	------



RECOMMENDED PROFILE Gradient 5.2%, 316FT/NM

DME I-DD	5	4	3	2.5 (SDF)	2
ALT(HGT)	1910(1638)	1590(1318)	1270(998)	1110(838)	960(688)

**MAPt NDB(L) JW**  
Climb straight ahead to **3000**, then turn left heading **180°M**, then as directed by ATC.  
  
RCF: Proceed as above, and continue on heading **180°M**, 2 minutes after initiating missed approach, turn left direct to **NDB(L) JW** to join the hold at **3000**.



Aircraft Category		A	B	C	D	Rate of descent	G/S KT	160	140	120	100	80
OCA (OCH)	WITH DME	680(408)	680(408)	680(408)	680(408)		FT/MIN	840	740	630	530	420
	NO DME	800(528)	800(528)	800(528)	800(528)							
VM(C)OCA (OCH AAL)	Total Area	770(493)	770(493)	1210(933)	1210(933)							
	South of RWY 08/26	770(493)	770(493)	1030(753)	1030(753)							

**AIRCRAFT UNABLE TO RECEIVE DME I-DD**  
As for main procedure except fly outbound for 2.5MIN (CAT A,B); 2MIN (CAT C,D) prior to procedure turn.